

Unità immobiliare " 9 "

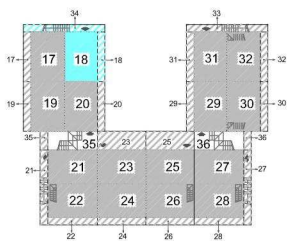
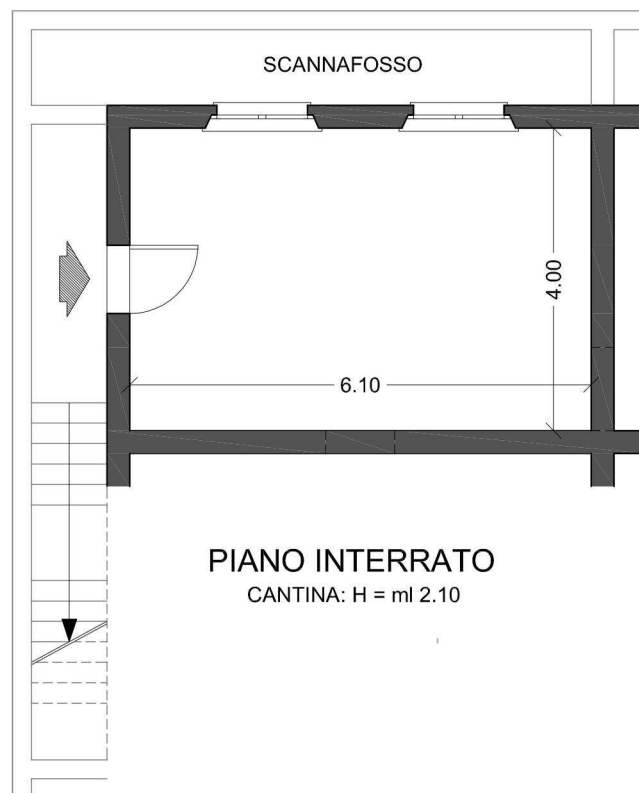
appartamento piano primo

con cantina in piano interrato e con giardino

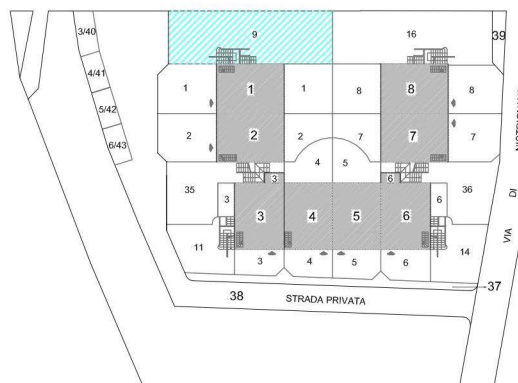
SUPERFICIE UTILE ABITABILE IN PIANO PRIMO = mq. 48.80
 SUPERFICIE CANTINE IN PIANO INTERRATO = mq. 24.40

SUPERFICIE UTILE COMPLESSIVA = mq. 73.20

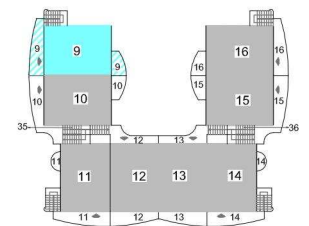
SCANNAFOSSO = mq. 15.80
 GIARDINO = mq. 120.00
 PERGOLATO = mq. 26.00
 TERRAZZO = mq. 17.40



PIANO INTERRATO

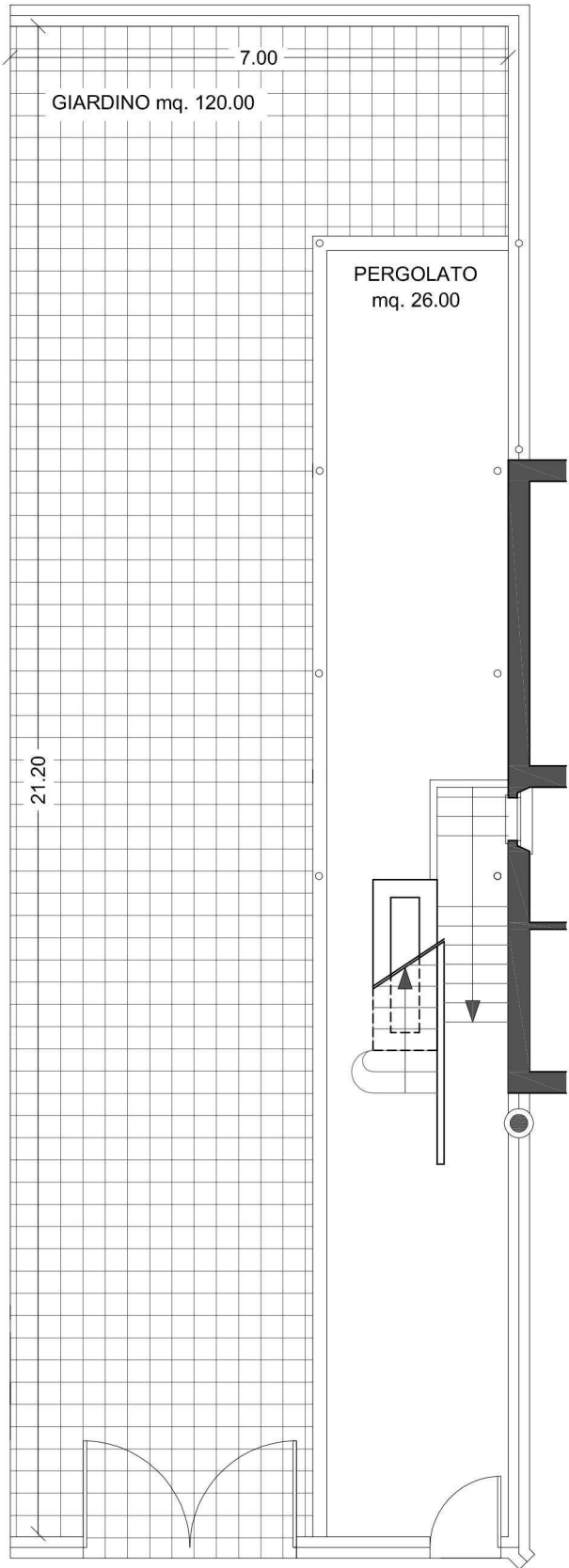


PIANO TERRENO



PIANO PRIMO

PIANO TERRA



PIANO PRIMO

H = ml 2.80

