

Unità immobiliare " 1-9 "

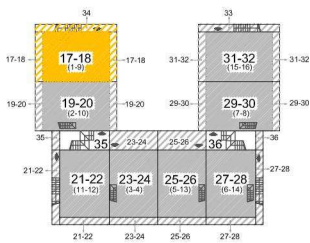
bifamiliare terratetto

con giardino su tre lati

SUPERFICIE UTILE ABITABILE IN PIANO TERRENO E PIENO PRIMO = mq. 97.60
 SUPERFICIE CANTINE IN PIANO INTERRATO = mq. 48.80

SUPERFICIE UTILE COMPLESSIVA = mq. 146.40

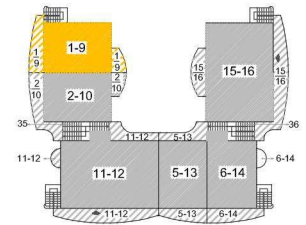
SCANNAFOSSO = mq. 23.20
 TERRAZZO = mq. 17.40
 GIARDINO = mq. 190.00
 PERGOLATO = mq. 44.60



PIANO INTERRATO



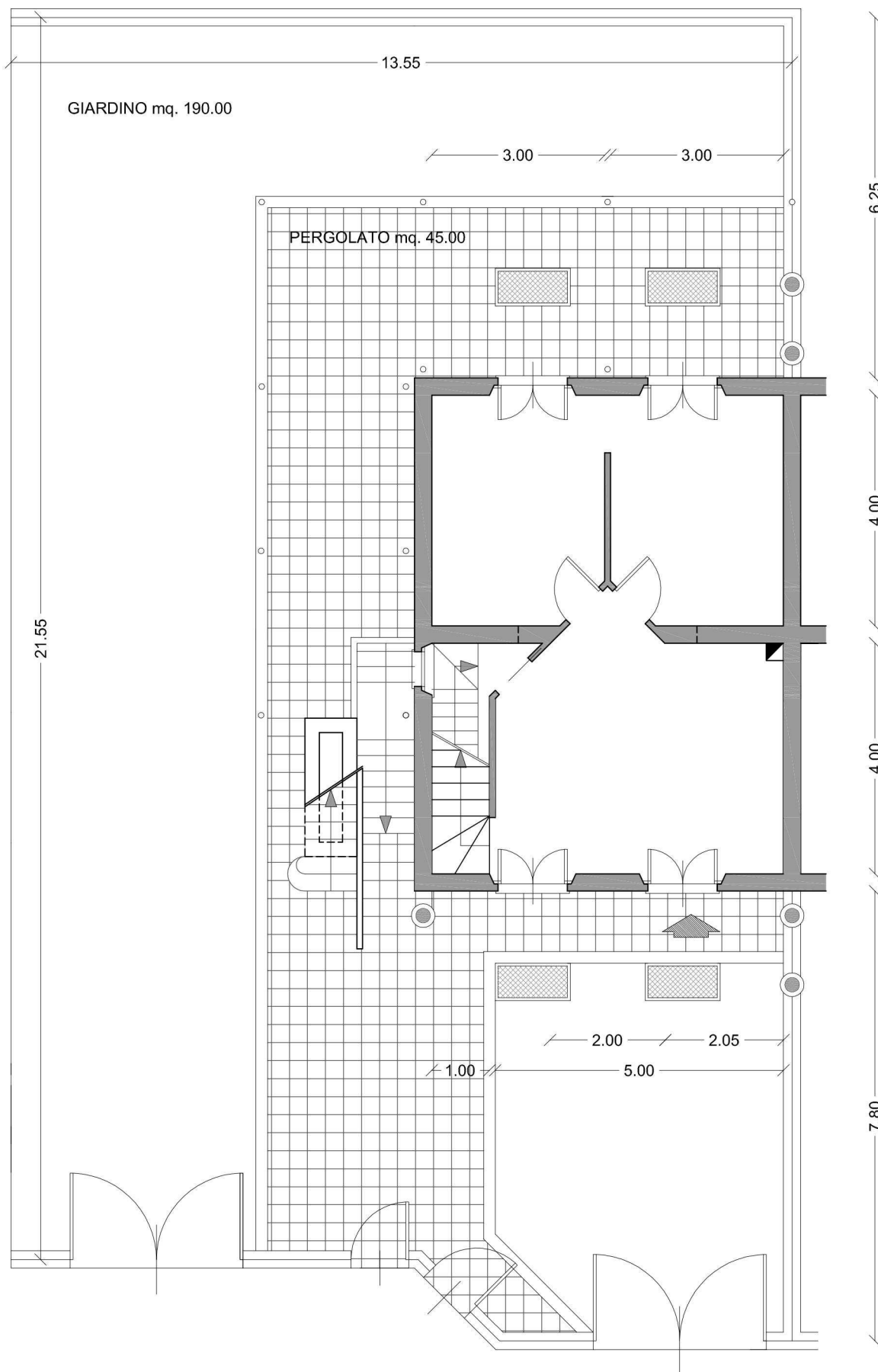
PIANO TERRENO

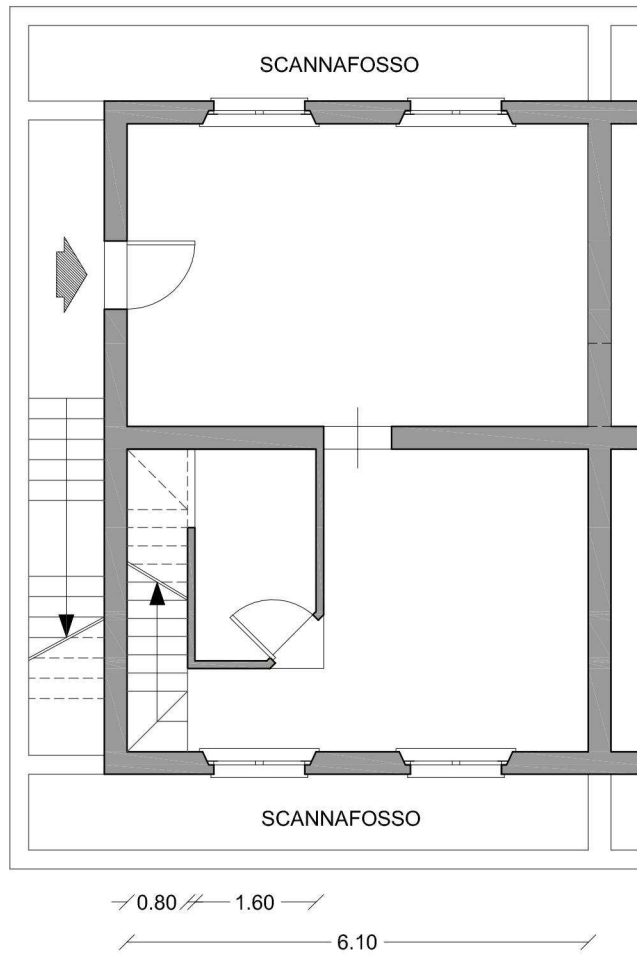


PIANO PRIMO

PIANO TERRA

H = ml 2.80





PIANO INTERRATO
 CANTINE: H = ml 2.10 - 2.40
 BAGNO: H = ml 2.40

